

KURLAJI WANGGA CULTURAL TOURS

Kurlaji Wangga [KUR-la-gee-won-GUH], meaning "river gum talk" has been operating for two years in facilitating Welcome to Countries, Cultural Advisory, and Art Exhibitions with K'uarla Mungga Art Gallery. Most of these services have been facilitated on National Park grounds at the Kalbarri Skywalk.

It is our goal to expand our tours by offering a new product to tourists visiting Kalbarri. This new product will visit three locations across a 20 KM journey taking 2.5 to 3 hours. The sites include Wittecarra Creek, Gidamarra Springs, and Murchison House Station. While visiting each site, I'll share stories of our culture and the significance of each location.

1. Cultural Tour

- a. Duration: 2.5 – 3 hours
- b. Locations: Wittecarra Creek, Gidamarra Springs, and Murchison House Station.
- c. Frequency: Once per fortnight on a Saturday or Sunday from March to July from 8am to 11am.
- d. Capacity: 8 PAX
- e. Staff – Colleen (owner/operator) and one guide on each tour
- f. Bookings – via our website

2. Overview - (Red line depicts tour route From South to North)

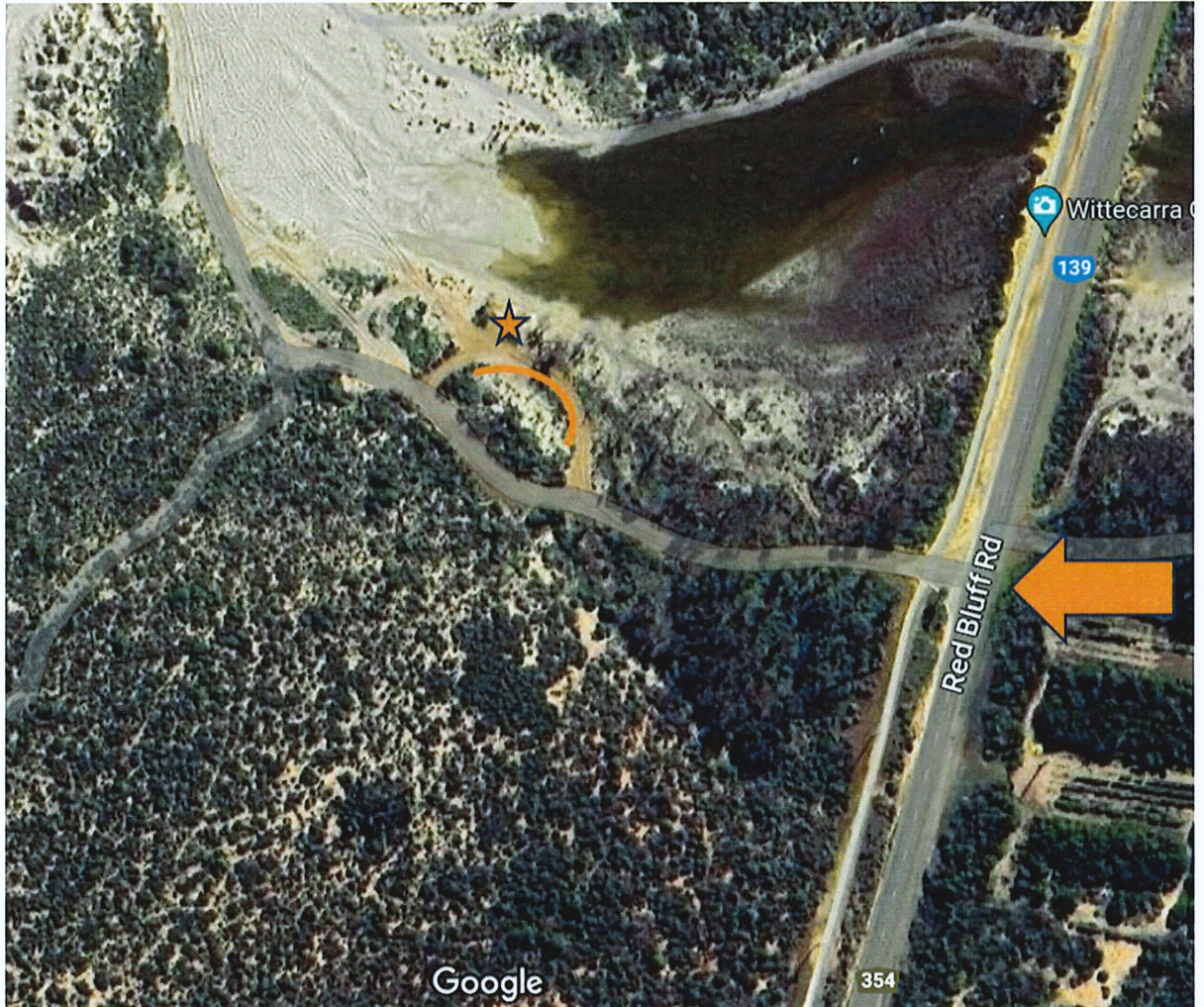


3. Proposed Itinerary

- a. Begin at Wittecarra Creek at 8am with Welcome to Country, Safety Inductions and Storytelling.
- b. Travel to Gidamarra Spring for Q&A session and Storytelling
- c. Travel to Murchison House Station for Storytelling
- d. End of Tour – Guests make their way back to town.

4. Wittecarra Creek

(Vehicles to park in crescent shape area. Gathering point identified by star)



5. Gidamarra Spring

(Vehicles park in rectangle area. Gathering point identified by star)



6. Murchison House Station
(Tour location identified by star)

