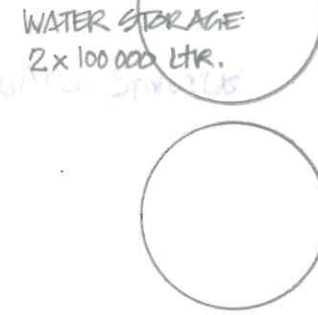
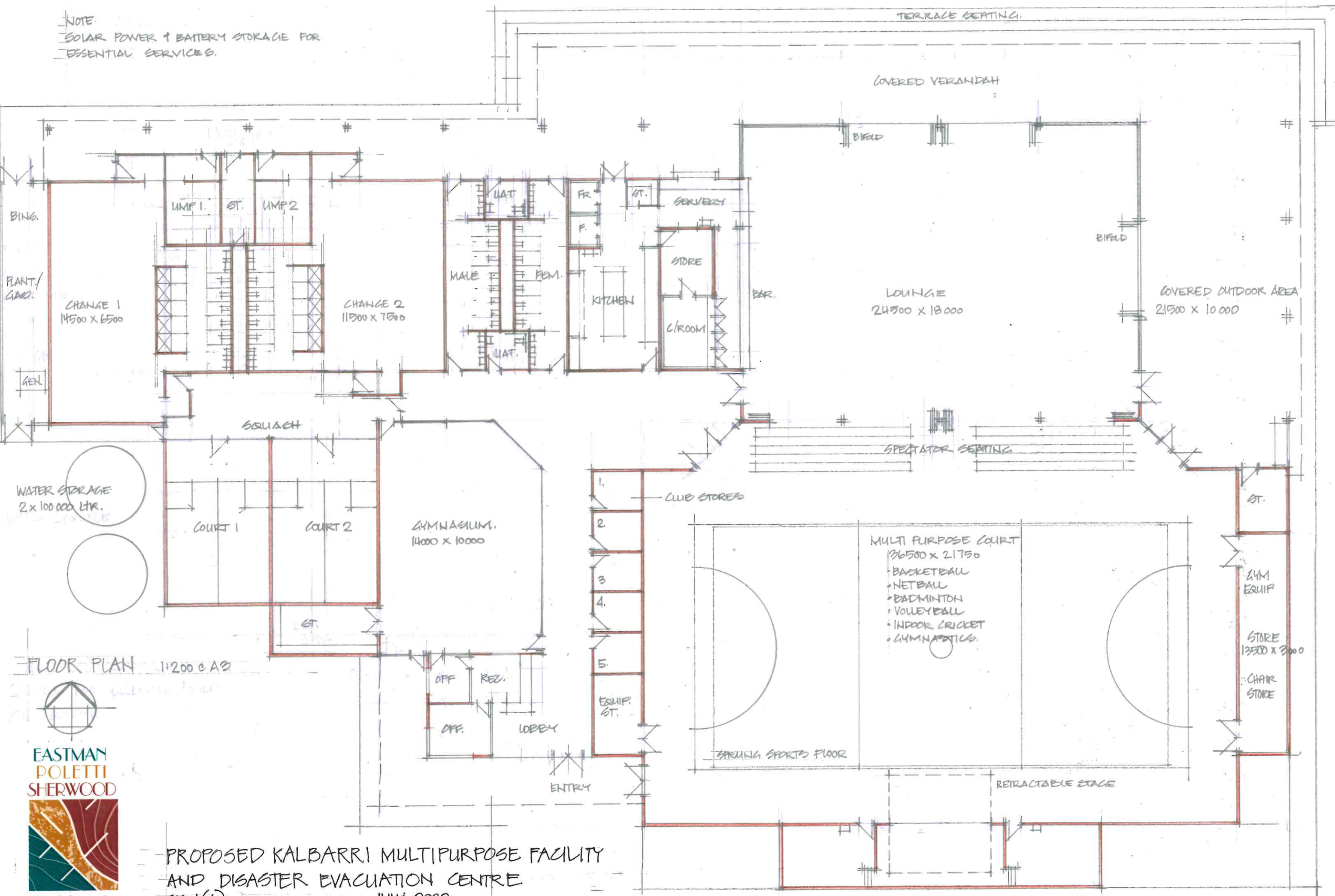
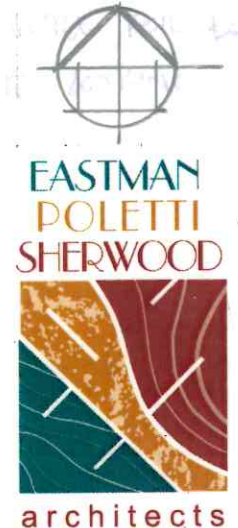


NOTE:
 SOLAR POWER + BATTERY STORAGE FOR
 ESSENTIAL SERVICES.



FLOOR PLAN 1:200 C.A.S.



PROPOSED KALBARRI MULTIPURPOSE FACILITY
 AND DISASTER EVACUATION CENTRE
 SK 1(A) JULY 2022