

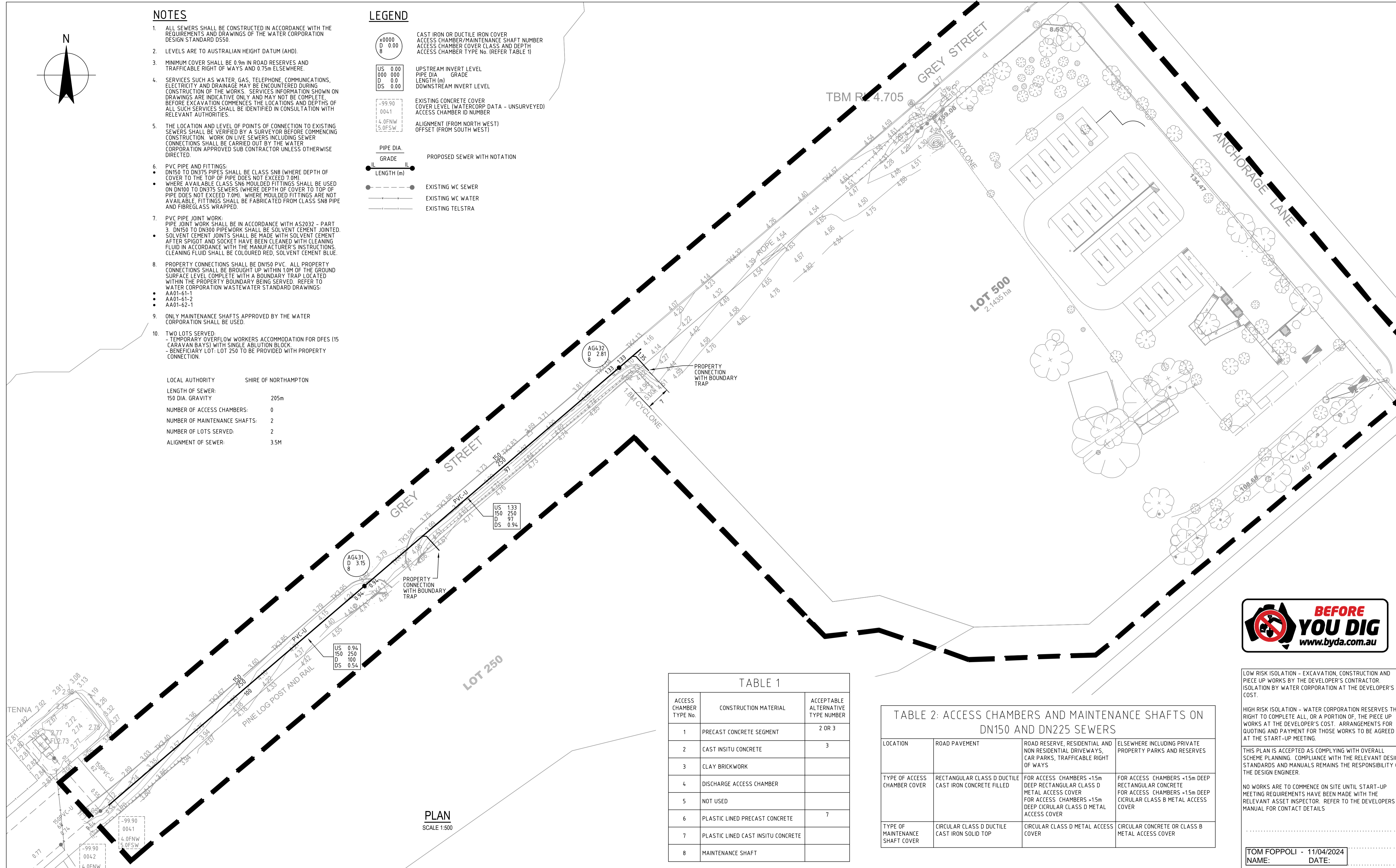
**NOTES**

- ALL SEWERS SHALL BE CONSTRUCTED IN ACCORDANCE WITH THE REQUIREMENTS AND DRAWINGS OF THE WATER CORPORATION DESIGN STANDARD D550.
- LEVELS ARE TO AUSTRALIAN HEIGHT DATUM (AHD).
- MINIMUM COVER SHALL BE 0.9m IN ROAD RESERVES AND TRAFFICABLE RIGHT OF WAYS AND 0.75m ELSEWHERE.
- SERVICES SUCH AS WATER, GAS, TELEPHONE, COMMUNICATIONS, ELECTRICITY AND DRAINAGE MAY BE ENCOUNTERED DURING CONSTRUCTION OF THE WORKS. SERVICES INFORMATION SHOWN ON DRAWINGS ARE INDICATIVE ONLY AND MAY NOT BE COMPLETE. BEFORE EXCAVATION COMMENCES THE LOCATIONS AND DEPTHS OF ALL SUCH SERVICES SHALL BE IDENTIFIED IN CONSULTATION WITH RELEVANT AUTHORITIES.
- THE LOCATION AND LEVEL OF POINTS OF CONNECTION TO EXISTING SEWERS SHALL BE VERIFIED BY A SURVEYOR BEFORE COMMENCING CONSTRUCTION. WORK ON LIVE SEWERS INCLUDING SEWER CONNECTIONS SHALL BE CARRIED OUT BY THE WATER CORPORATION APPROVED SUB CONTRACTOR UNLESS OTHERWISE DIRECTED.
- PVC PIPE AND FITTINGS:
  - DN150 TO DN375 PIPES SHALL BE CLASS SN8 (WHERE DEPTH OF COVER TO THE TOP OF PIPE DOES NOT EXCEED 7.0M)
  - WHERE AVAILABLE CLASS SN6 MOULDED FITTINGS SHALL BE USED ON DN100 TO DN375 SEWERS (WHERE DEPTH OF COVER TO TOP OF PIPE DOES NOT EXCEED 7.0M). WHERE MOULDED FITTINGS ARE NOT AVAILABLE, FITTINGS SHALL BE FABRICATED FROM CLASS SN8 PIPE AND FIBREGLASS WRAPPED.
- PVC PIPE JOINT WORK:
  - PIPE JOINT WORK SHALL BE IN ACCORDANCE WITH AS2032 - PART 3. DN150 TO DN300 PIPEWORK SHALL BE SOLVENT CEMENT JOINTED.
  - SOLVENT CEMENT JOINTS SHALL BE MADE WITH SOLVENT CEMENT AFTER SPIGOT AND SOCKET HAVE BEEN CLEANED WITH CLEANING FLUID IN ACCORDANCE WITH THE MANUFACTURER'S INSTRUCTIONS. CLEANING FLUID SHALL BE COLOURED RED, SOLVENT CEMENT BLUE.
- PROPERTY CONNECTIONS SHALL BE DN150 PVC. ALL PROPERTY CONNECTIONS SHALL BE BROUGHT UP WITHIN 10M OF THE GROUND SURFACE LEVEL COMPLETE WITH A BOUNDARY TRAP LOCATED WITHIN THE PROPERTY BOUNDARY BEING SERVED. REFER TO WATER CORPORATION WASTEWATER STANDARD DRAWINGS:
  - AA01-61-1
  - AA01-61-2
  - AA01-62-1
- ONLY MAINTENANCE SHAFTS APPROVED BY THE WATER CORPORATION SHALL BE USED.
- TWO LOTS SERVED:
  - TEMPORARY OVERFLOW WORKERS ACCOMMODATION FOR DFES (15 CARAVAN BAYS) WITH SINGLE ABLUTION BLOCK
  - BENEFICIARY LOT: LOT 250 TO BE PROVIDED WITH PROPERTY CONNECTION.

LOCAL AUTHORITY SHIRE OF NORTHAMPTON  
 LENGTH OF SEWER: 150 DIA. GRAVITY 205m  
 NUMBER OF ACCESS CHAMBERS: 0  
 NUMBER OF MAINTENANCE SHAFTS: 2  
 NUMBER OF LOTS SERVED: 2  
 ALIGNMENT OF SEWER: 3.5M

**LEGEND**

- CAST IRON OR DUCTILE IRON COVER  
 ACCESS CHAMBER/MAINTENANCE SHAFT NUMBER  
 ACCESS CHAMBER COVER CLASS AND DEPTH  
 ACCESS CHAMBER TYPE No. (REFER TABLE 1)
- UPSTREAM INVERT LEVEL  
 PIPE DIA GRADE  
 LENGTH (m)  
 DOWNSTREAM INVERT LEVEL
- EXISTING CONCRETE COVER  
 COVER LEVEL (WATERCORP DATA - UNSURVEYED)  
 ACCESS CHAMBER ID NUMBER
- ALIGNMENT (FROM NORTH WEST)  
 OFFSET (FROM SOUTH WEST)
- PROPOSED SEWER WITH NOTATION
- EXISTING WC SEWER
- EXISTING WC WATER
- EXISTING TELSTRA



**PLAN**

SCALE 1:500

**TABLE 1**

ACCESS CHAMBER TYPE No.	CONSTRUCTION MATERIAL	ACCEPTABLE ALTERNATIVE TYPE NUMBER
1	PRECAST CONCRETE SEGMENT	2 OR 3
2	CAST INSITU CONCRETE	3
3	CLAY BRICKWORK	
4	DISCHARGE ACCESS CHAMBER	
5	NOT USED	
6	PLASTIC LINED PRECAST CONCRETE	7
7	PLASTIC LINED CAST INSITU CONCRETE	
8	MAINTENANCE SHAFT	

**TABLE 2: ACCESS CHAMBERS AND MAINTENANCE SHAFTS ON DN150 AND DN225 SEWERS**

LOCATION	ROAD PAVEMENT	ROAD RESERVE, RESIDENTIAL AND NON RESIDENTIAL DRIVEWAYS, CAR PARKS, TRAFFICABLE RIGHT OF WAYS	ELSEWHERE INCLUDING PRIVATE PROPERTY PARKS AND RESERVES
TYPE OF ACCESS CHAMBER COVER	RECTANGULAR CLASS D DUCTILE CAST IRON CONCRETE FILLED	FOR ACCESS CHAMBERS <15m DEEP RECTANGULAR CLASS D METAL ACCESS COVER FOR ACCESS CHAMBERS >15m DEEP CIRCULAR CLASS D METAL ACCESS COVER	FOR ACCESS CHAMBERS <15m DEEP RECTANGULAR CONCRETE FOR ACCESS CHAMBERS >15m DEEP CIRCULAR CLASS B METAL ACCESS COVER
TYPE OF MAINTENANCE SHAFT COVER	CIRCULAR CLASS D DUCTILE CAST IRON SOLID TOP	CIRCULAR CLASS D METAL ACCESS COVER	CIRCULAR CONCRETE OR CLASS B METAL ACCESS COVER



LOW RISK ISOLATION - EXCAVATION, CONSTRUCTION AND PIECE UP WORKS BY THE DEVELOPER'S CONTRACTOR. ISOLATION BY WATER CORPORATION AT THE DEVELOPER'S COST.

HIGH RISK ISOLATION - WATER CORPORATION RESERVES THE RIGHT TO COMPLETE ALL, OR A PORTION OF, THE PIECE UP WORKS AT THE DEVELOPER'S COST. ARRANGEMENTS FOR QUOTING AND PAYMENT FOR THOSE WORKS TO BE AGREED AT THE START-UP MEETING.

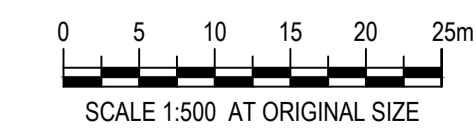
THIS PLAN IS ACCEPTED AS COMPLYING WITH OVERALL SCHEME PLANNING. COMPLIANCE WITH THE RELEVANT DESIGN STANDARDS AND MANUALS REMAINS THE RESPONSIBILITY OF THE DESIGN ENGINEER.

NO WORKS ARE TO COMMENCE ON SITE UNTIL START-UP MEETING REQUIREMENTS HAVE BEEN MADE WITH THE RELEVANT ASSET INSPECTOR. REFER TO THE DEVELOPERS MANUAL FOR CONTACT DETAILS

TOM FOPPOLI - 11/04/2024  
 NAME: DATE:

Rev	Description	Checked	Approved	Date
B	FINAL DESIGN SUBMISSION (WATER CORPORATION)	RH	AK	10.04.24
A	INITIAL DESIGN SUBMISSION (WATER CORPORATION)	RH	AK	18.01.24

Author S. MOSAVAL    Drafting Check -  
 Designer S. MOSAVAL    Design Check R. HESNAN



PLAN  
 OK20-001-001-01A  
 FILE No.  
 1664.61791



Client SHIRE OF NORTHAMPTON  
 Project LOT 500 ANCHORAGE LANE - SEWER MAINS EXTENSION, GREY STREET KALBARRI  
 Status FINAL DESIGN

Drawing Title SEWER RETICULATION PLAN  
 SITE PLAN

Drawing No. 12596020-GHD-HY-100  
 Rev B

